

easyfit labelling system 2

Formatura Iniezione Polimeri

User's Manual

easyfit labelling system
All rights reserved

THIS IS A FREEWARE SOFTWARE

THIS PRODUCT IS SUPPLIED BY FIP - FORMATURA INIEZIONE POLIMERI S.P.A. IN THIS FORMAT AND WITHOUT ANY EXPLICIT OR IMPLICIT WARRANTY.

IN NO CIRCUMSTANCE COULD FIP - FORMATURA INIEZIONE POLIMERI S.P.A. BE HELD RESPONSIBLE TOWARD THIRD PARTIES FOR SPECIAL, COLLATERAL, ACCIDENTAL, DIRECT OR INDIRECT OR CONSEQUENTIAL DAMAGES IN CONNECTION WITH OR DERIVING FROM THE USE OF THIS PRODUCT.

FIP
Formatura
Iniezione
Polimeri
S.p.A.

Società Unipersonale
Direzione Generale, Sede Legale e Stabilimento

Località Pian di Parata 16015 Casella (GE) Italy
Tel. +39 010.9621.1 Fax +39 010.9621.209 info@fipnet.it www.fipnet.it
Cap. Soc.: €6.200.000 C.F. e P.IVA 00276860103 C.C.I.A.A. Genova: 196879 N. 27325 Reg. Imp. Canc. Trib. GE



an *OAliaxis* company

Introduction

The new valves of the Easyfit line have been planned and realised so that they can be personalised with the dedicated Easyfit Labelling System.

This system actually allows the realisation on one's own account of special labels to be inserted in LCE modules, lodged in the handle (models VEE, VXE and FE, FK, VKD large diameter) or on the body itself of the valve (model SXE)

It would thus be extremely simple to apply to the valves company brands, identification serial numbers or service indications such as for example the valve's function inside the plant and the fluid transported, but also specific information about the service given to clients, such as the name of the client or the date and place where the installation has been made.

The simple and intuitive software allows the superimposition of text on pictures thus seeing immediately the correct size of the text and its position in relation to the kind of label which has been selected.

It supports JPEG, GIF, PNG, TIF and BMP formats providing a function of automatic resizing of pictures.

There are also some useful tools to alter or improve the quality of the pictures used as a background to the labels.

Owing to the guided procedure of calibration, it would be simple to print the labels with any InkJet printer. Once printed, the labels are ready to be applied on the basis in white PVC-U to be inserted under the transparent protection cap.

By using this system the labels remain protected for a long time from the surrounding environment and from wear and tear during normal use.

Index

System requirements	...	5
Chapter 1	Page Setup	...7
	New sheet	...8
	Insert sheet	...14
	Alter sheet	...15
	Import	...16
Chapter 2	Programme options	...18
	Alter pictures	...18

System requirements

Before installing the Easyfit labelling system on a computer check that it satisfies the following system requirements:

- Microsoft windows 2000 / XP / Vista / 7, 32-Bit (x86), 64-Bit (x64)
- Framework 2
- Required space: about 5 Mb

Chapter 1

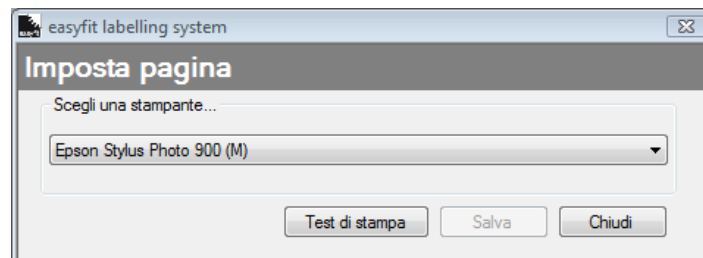
- Page Setup
- New sheet
- Insert sheet
- Alter sheet
- Import

Page Setup

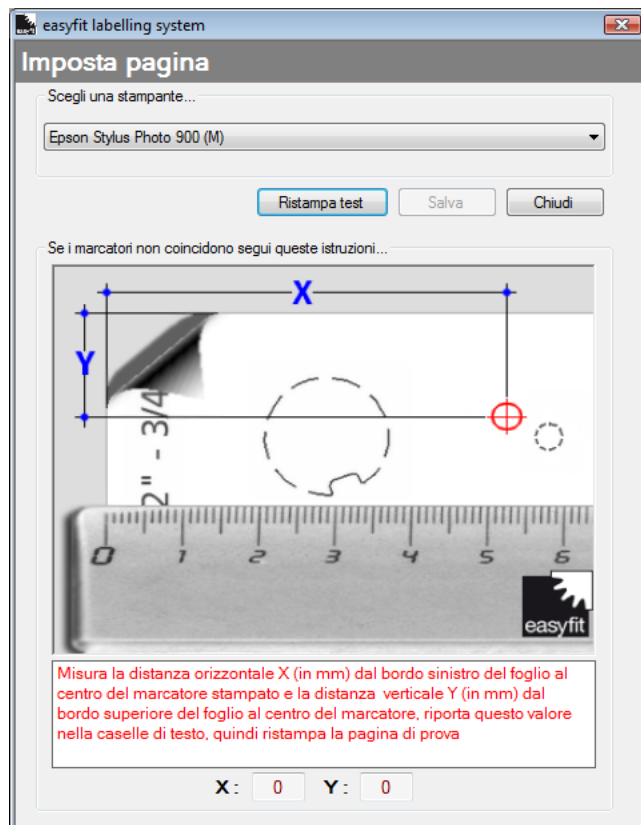
The printing of the labels provides for the creation of a page setup in operation with the printer used.

Click on the icon **Page Setup**.

From the dialogue box select the printer, insert a sheet of labels contained in the LSE set supplied by FIP (the page setup is valid for any size of the set of labels) and click on the icon **Printout test**.



Check that the target (circles+crosses) printed in red by the programme coincide as much as possible with the pre-incised markers on the labels sheet. Should they not coincide continue as follows:



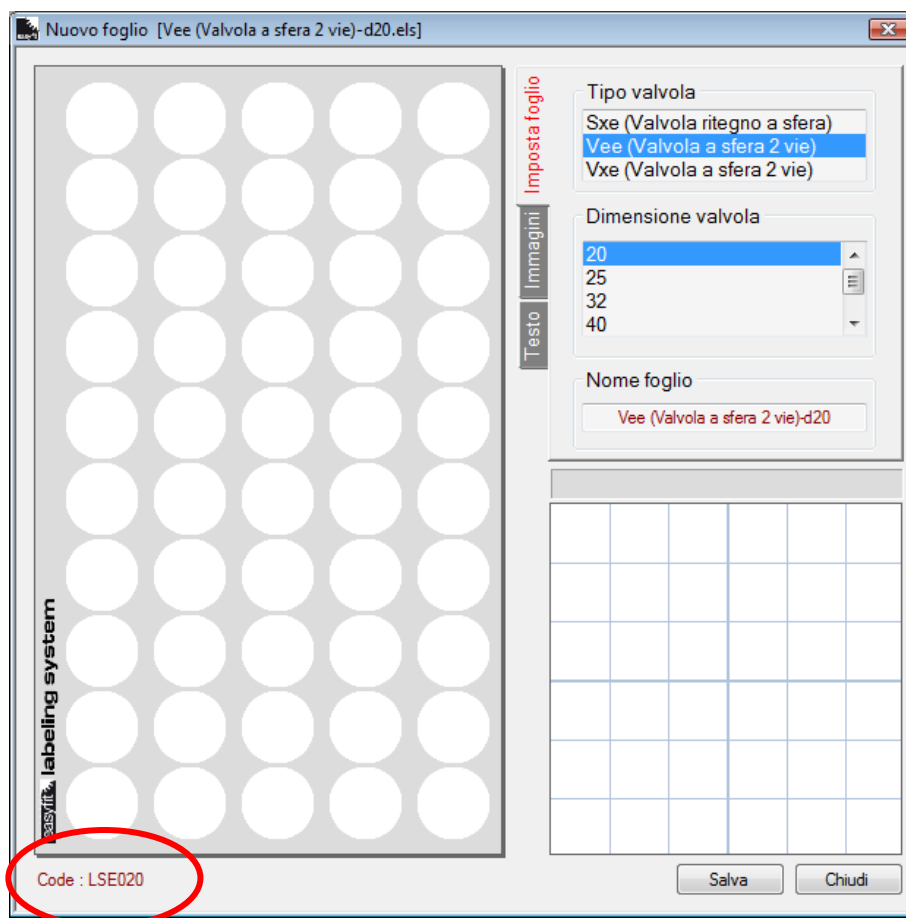
- measure the horizontal distance **X** (in mm) at the left edge of the sheet at the centre of the printed target.
-
- measure the vertical distance **Y** (in mm) at the upper edge of the sheet at the centre of the target. (fractions of a millimetre are also to be inserted separated by a point e.g. "48.4")
- Re-insert this value in the text boxes, then reprint the test page
Repeat this procedure until you deem the superimposition of the targets to be correct.

Once you have set the correct parameters click on the icon **Save** and name the layout file, for example *PageSetup(Epson Stylus Photo 900 (M)).fp/* thus saving the calibrated printer.

New sheet

From the main programme menu click on the icon **New sheet**. Once the dialogue box is open select the **Valve Type** then the **Valve Size** which should receive the label; at the foot on the left there could be seen the code (e.g. "code : LSE020") of the set of LSE labels to be used for the selected valve.

In the box **Sheet Name** enter the name of the new file to be created, and in case the name of the new file already existed a warning message would pop up before continuing to save the file.



To compile the labels it would be necessary to select the individual labels by means of a click of the mouse or, by making a "window" selection*.

To deselect them it would be sufficient to click the individual label involved or to press the esc key on the computer keyboard to deselect them all.


* "Window" selection is effected by clicking the left mouse button on an area of the sheet showing the labels and, while keeping the button pressed, by dragging the mouse inscribing a selection rectangle.

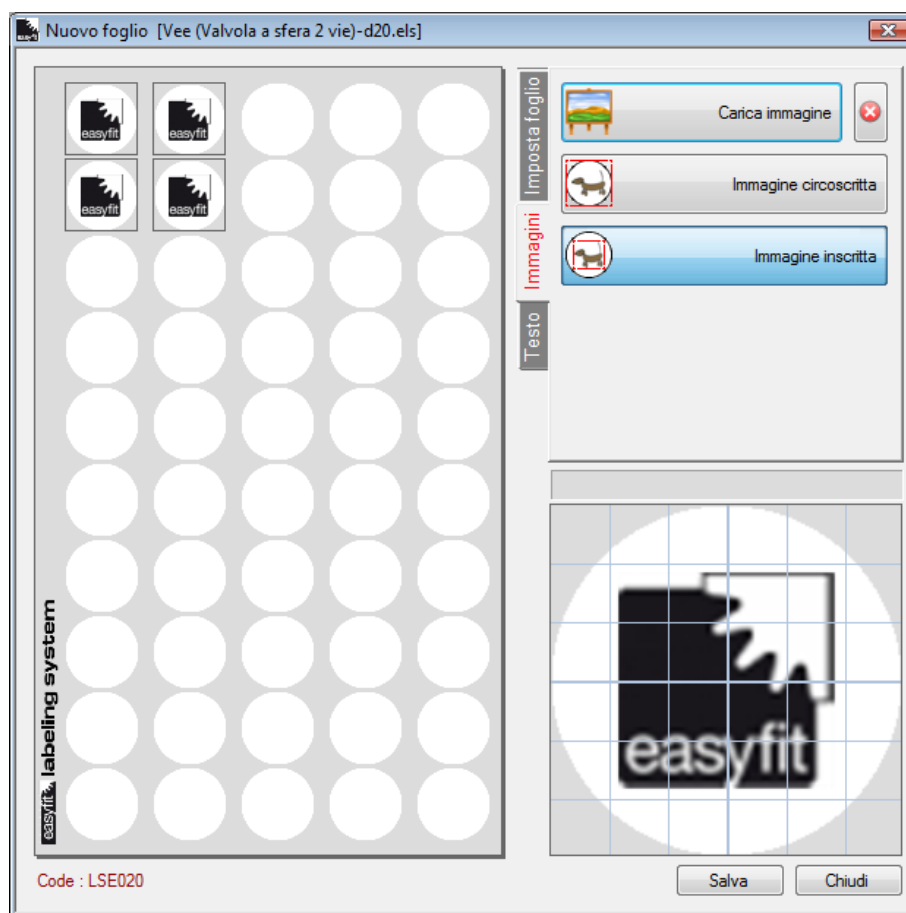
How to upload an picture

After having selected the labels, click on the **Pictures** menu, then on the icon **Upload picture**. From the dialogue box choose a picture file to be used as background; you can upload JPEG, GIF, PNG, TIF and BMP pictures.

Then enter the type of automatic adaptation of the picture, **Inscribed picture** or **Circumscribed picture**, at the label's diameter in terms of the rendering of the picture itself, for example, a square picture would preferably take an **Inscribed** type of adaptation.

The pre-set adaptation setting of the picture is that of an **Inscribed picture**.

It would be possible to remove the background picture from all selected labels by simply clicking on icon 



How to insert the text

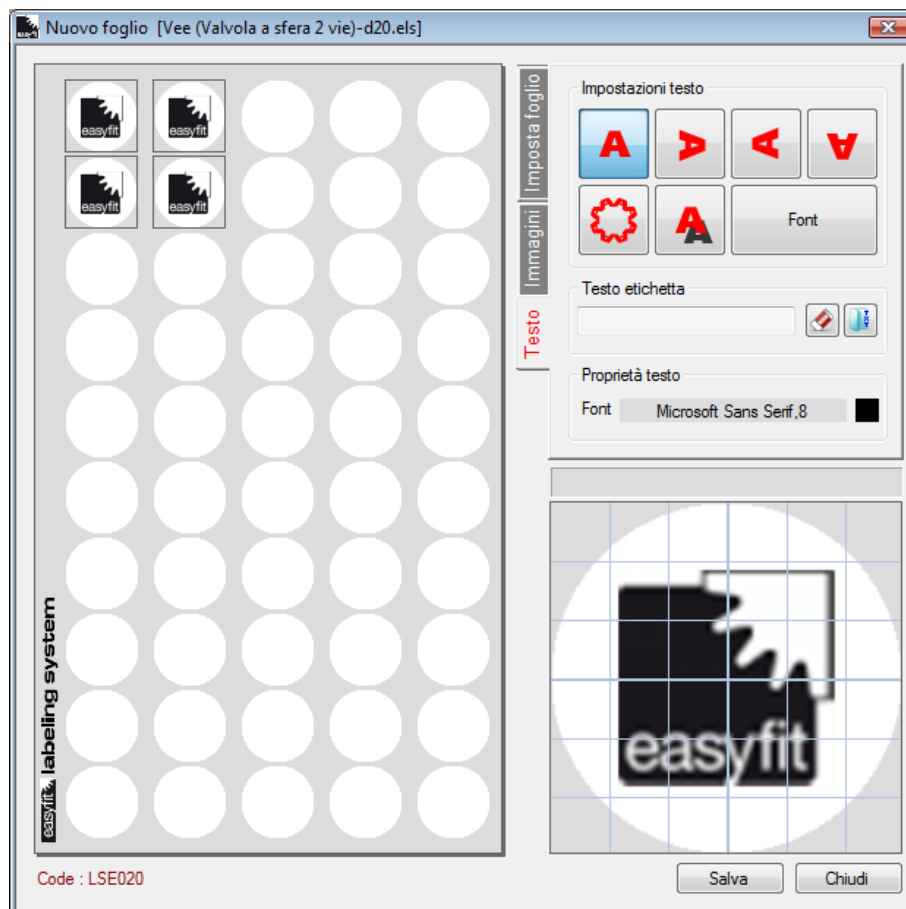
All labels could contain a text; one can write both horizontally and vertically but one can also insert a border along the circumference of the selected label.

For each label one can insert more than one text having an independent formation and position.

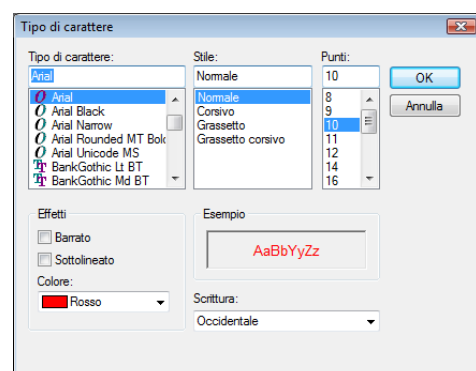
There could be applied to the text a shadow effect, to obtain this click on icon



Select the menu **Text**.



The default character could be changed by clicking on the icon **Font**, from the dialogue box select the type of character, size, colour etc., then confirm your choice.



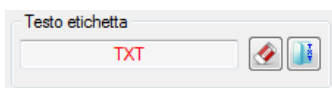
Linear text

To insert one or more linear writings it would be necessary to select the orientation of the text before proceeding with its insertion.

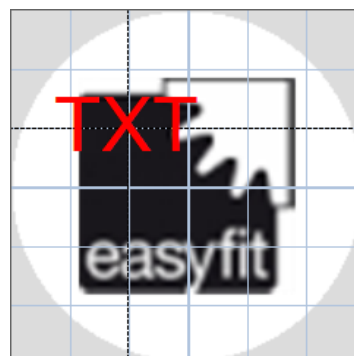
The orientation could be selected by means of these icons.



In the **Label text** box enter the text to be transferred on the selected labels.



Then shift the mouse cursor on to the preview and click with the left button to confirm the position of the writing. Having done so there will appear on all selected labels in the position specified by you the previously keyed writing.



Repeat this procedure with a different text and position.



You can remove texts from all selected labels by clicking on the icon



Besides manual text insertion one can import a data file or perform a simple **Copy & Paste** as in Windows.

In this case a single text will be automatically centred on the labels.

A file is imported by clicking on the icon



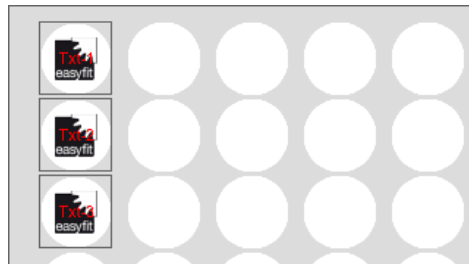
The file to be imported should be in a text format with a.TXT extension and should have as many lines and labels as one would like to compile.

A simple example of a file to compile the first three labels:

Txt-1

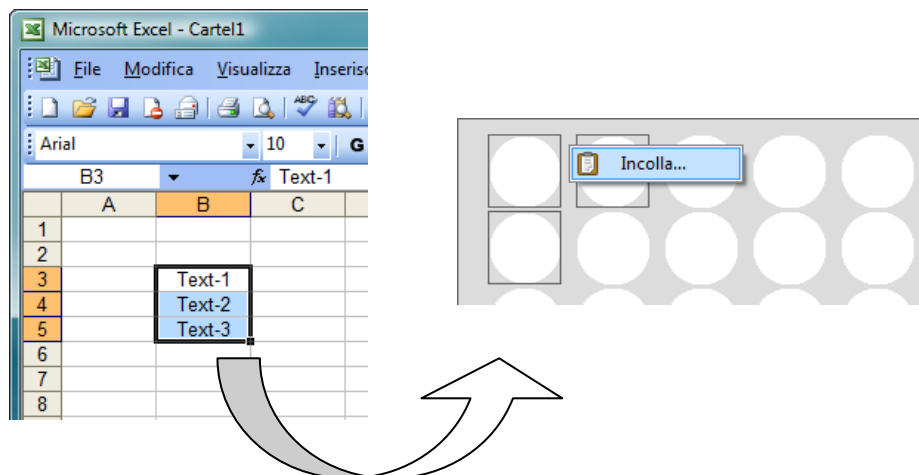
Txt-2

Txt-3



As previously described, besides importing a text file, one can also import data from another application (e.g. Microsoft excel).

Select and copy the data from Microsoft excel, then move over the labels with the mouse cursor, click with the left mouse button and paste the data.



Selection on the original sheet should anyway always happen on a single column of data.

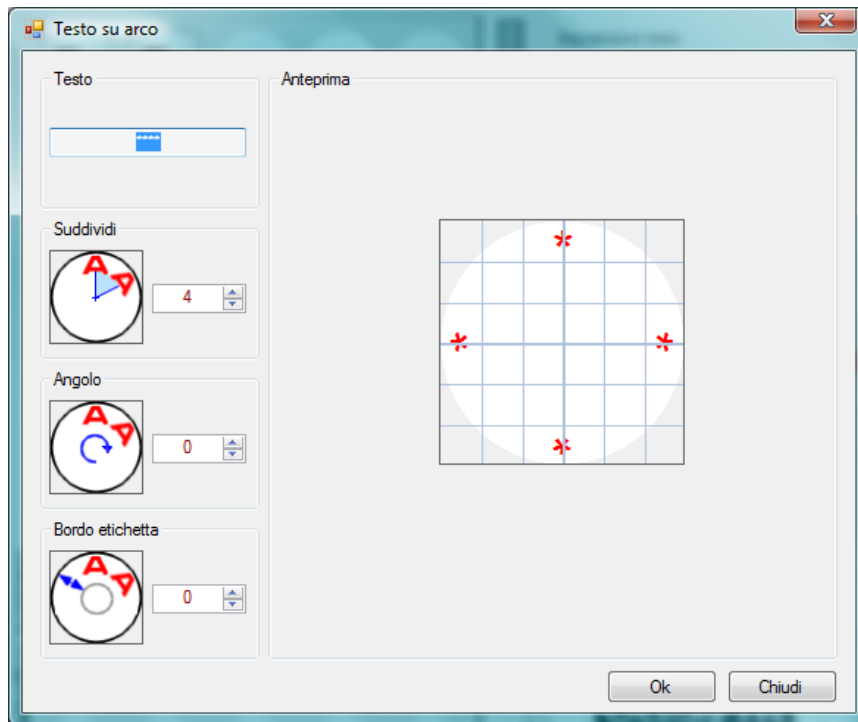
Windows and Microsoft excel are software registered by Microsoft Corporation..

Circular text

In the box **Label text** enter the text to be transferred on the selected labels then

click on the icon





The programme automatically proposes a subdivision of the text on the basis of the number of characters making up the entry.

You can besides alter the position of the beginning of the writing and the size of the border of the label not involved in the writing.

Change the values until you satisfy your requirements then confirm with the **OK** icon.

Having finished the compilation operations you can save the file by clicking the **Save** icon.

If the keyed name of the new file already exists on your computer a warning message will pop up.

Insert sheet

This command allows you to view and subsequently print the labels which have been previously created.

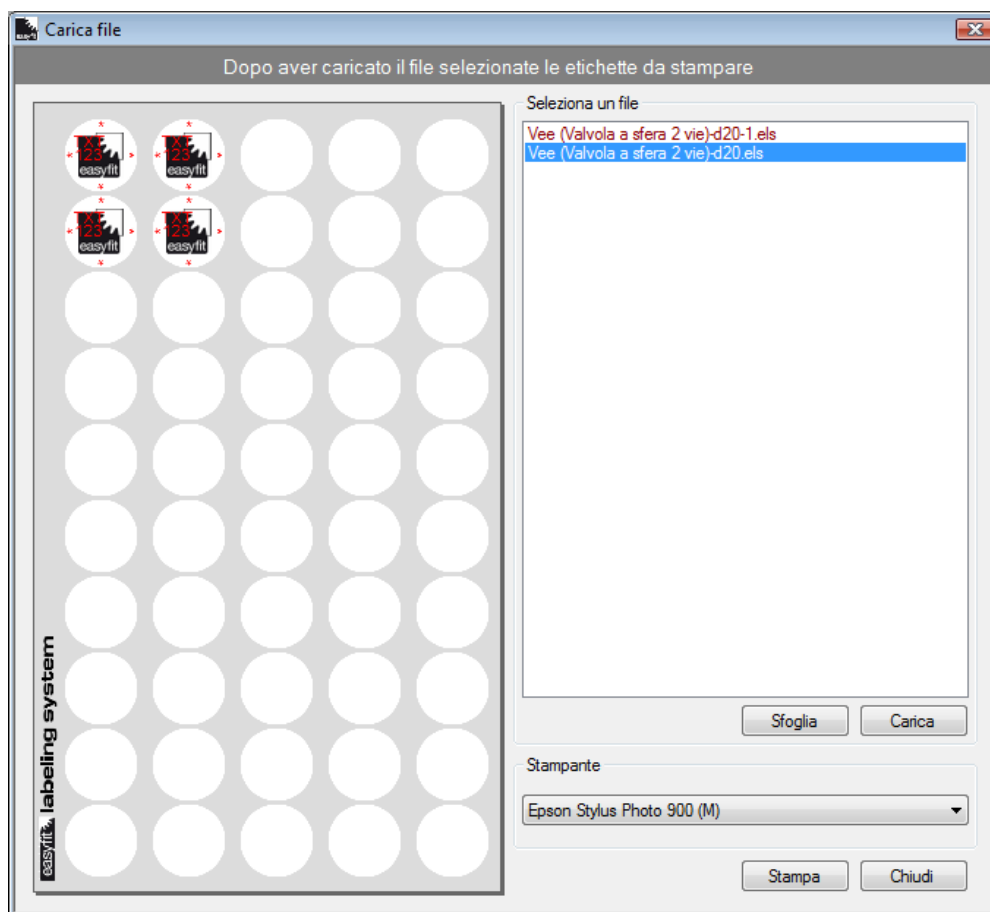
NOTE

Before passing on to print it is necessary to suitably configure the printer to be used (see page 7).

From the main programme menu click on the **Insert sheet** icon. The programme will then propose a window from which one can select previously created files.

Select the Vee (Valvola a sfera 2 vie)-d20.els sheet and confirm with the **Ok** icon.

Select either individually or through a selection box the labels you wish to print.



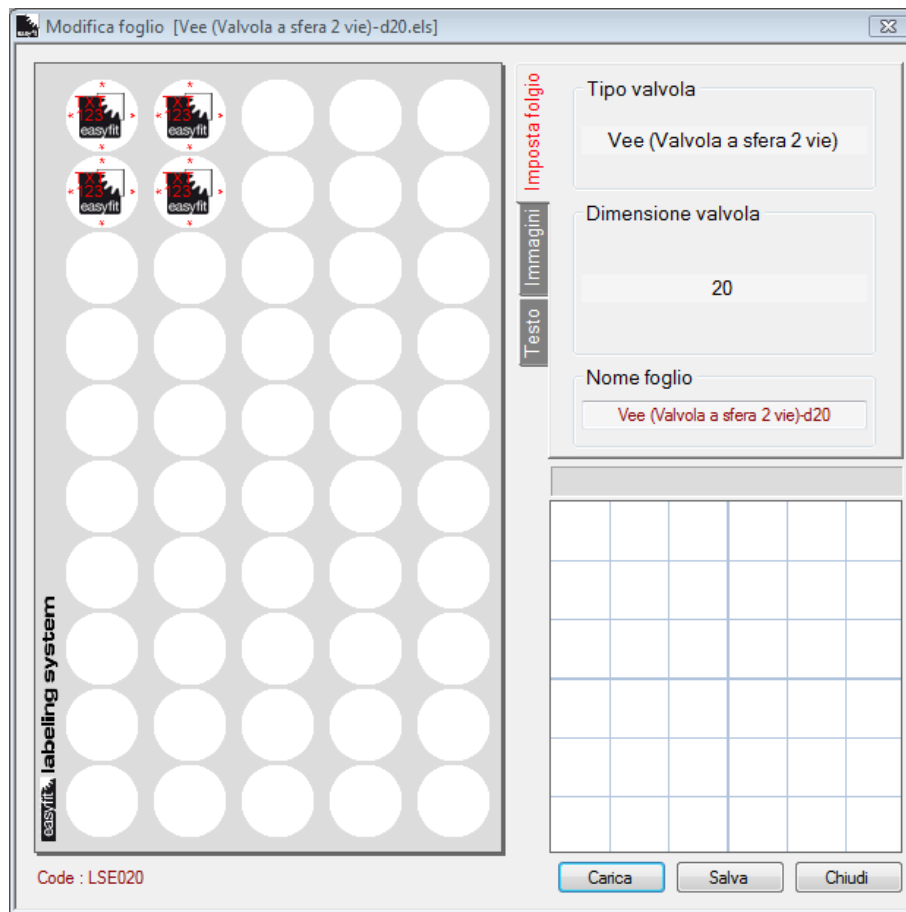
From the drop down menu select the previously configured printer (**Page Setup** icon) and finish the operation by clicking on the **Print** icon.

Should the selected printer not have available of a configuration file (see page 7) a warning message will pop up.

Alter sheet

This command allows you to alter the previously created labels.

From the main programme menu click on the icon **Change sheet** then on the icon **Upload**. From the dialogue box select the Vee (2way Spherical Valve)-d20.els file and confirm the operation.




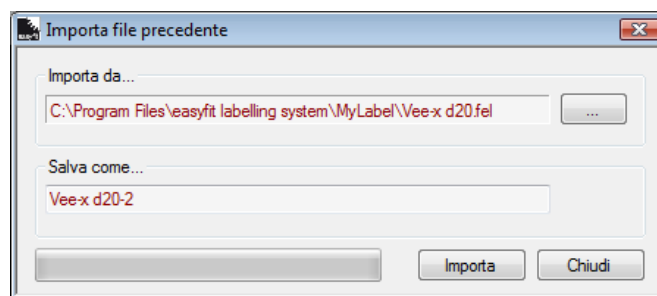
You can now alter every single label with the tools described in the **New sheet** paragraph.

The current file can be saved under a different name thus keeping the original one unaltered.

Import

This command allows the importing and conversion of files produced with previous Easyfit labelling system versions.

Click on the **Sheet>Import** menu, then click on the icon  to flip the pages of your calculator and identify the file to be uploaded. Then alter the name of the file and click on the **Import** icon.



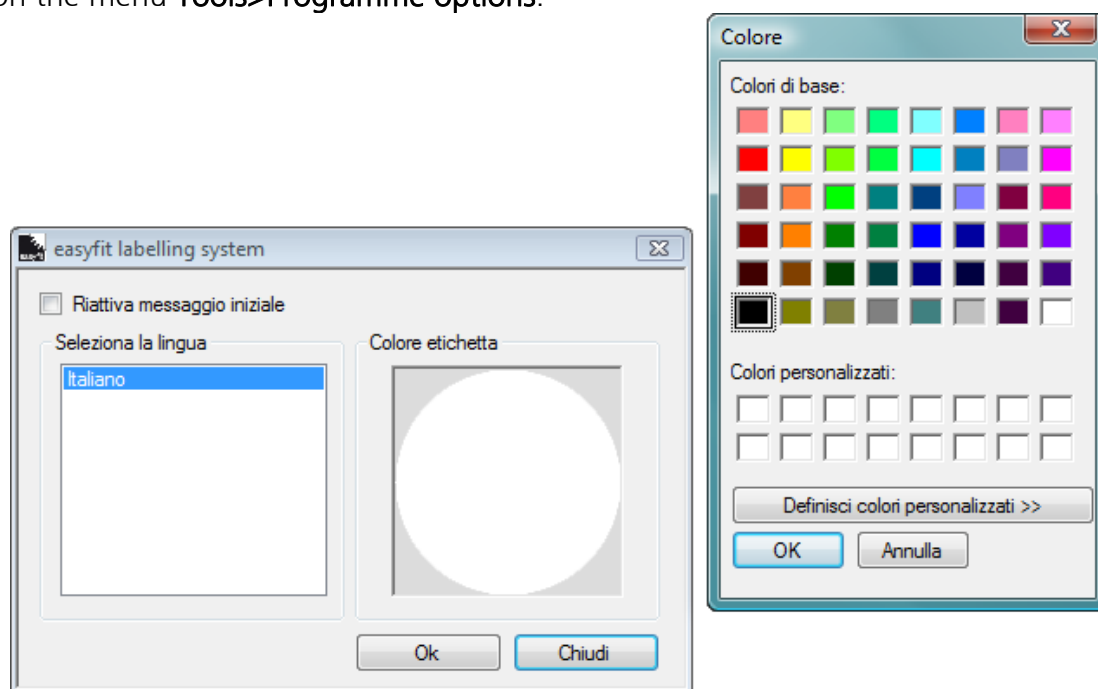
Chapter 2

- Programme options
- Alter pictures

Programme options

This command allows you to set the programme language and to change the background colour of the labels.

Click on the menu **Tools>Programme options**.



Select a language from those available on the visible list for programme interface. To change the background colour of the labels click with the left mouse button over the example of the label, select a colour and confirm.

Finish the operation by clicking on the **Ok** icon.

Alter pictures

The purpose of this commando is to facilitate the use of your programme pre-set for the handling and alteration of pictures to be used as background for your labels.

A simple example could be that of capturing the screen view of a programme in course. By pressing the keyboard key **Stamp**, the screen picture will be transferred in the Windows clipboard.

By using the short cut, made available by Easyfit labelling system, you will be automatically shown the previously captured screen view, ready to be subsequently handled or simply recut to be more suitable for your needs.

Were the Windows clipboard to be empty, your graphics programme will show with an empty picture ready to be used.